



STEEL

INDUSTRY EXPERTISE

STEEL PRODUCTS OFFER UNMATCHED
STRENGTH & DURABILITY

About Us

We are honored to introduce ourselves as a leading stockist and supplier of Alloy Steel, Carbon Steel, Case Hardening Steel, and Mild Steel in Pune for the past 20 years.

We regularly supply to various manufacturing units in the sugar, automobile, paper, pulp, chemicals, fertilizers, and oil & gas industries. Our materials are used for gears, hoists, cranes, machining, and hydraulic products.

At the core of our operations lies a dedication to customer satisfaction, ensuring prompt and efficient service at all times. We take pride in our longstanding relationships with clients and our role in contributing to their success.



Industry Expertise



Timely Delivery



Quality Assurance



Longstanding Relationships



Customer Satisfaction



Application Versatility

Vision



"To be the premier provider of high-quality Alloy Steel, Carbon Steel, Case Hardening Steel, and Mild Steel solutions in Pune, recognized for our reliability, expertise, and commitment to customer satisfaction."

Mission



"To consistently deliver superior quality steel products sourced from trusted global suppliers."

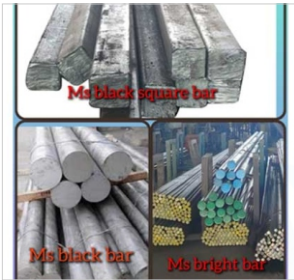
"To provide tailored solutions that meet the specific needs of each customer, ensuring their operational success."

"To foster enduring partnerships with our clients, built on trust, transparency, and mutual respect."

"To uphold the highest standards of integrity, ethics, and sustainability in every aspect of our operations."

Our Products

MILD STEEL



SAE1018



ST52-3



SA105



EN1A

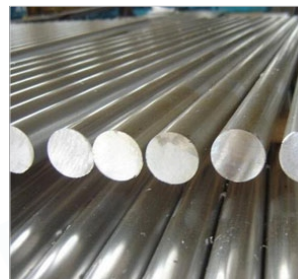
ALLOY STEEL



EN19



4140



EN24



En8 / EN8D

CARBON STEEL



C45

CASE HARDENING STEEL



EN 9



16/20 MnCr5

SPRING STEEL



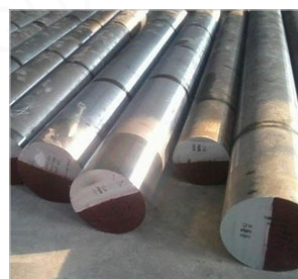
SAE8620



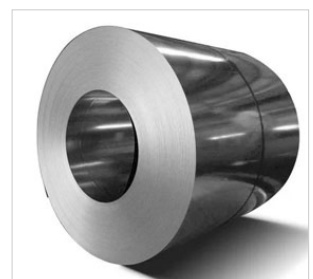
En353



En36



En47



En42

DIE STEEL



OHNS / En31



D2 / 1.2379

ALUMINIUM



6062/6061/6082T6

STAINLESS STEEL



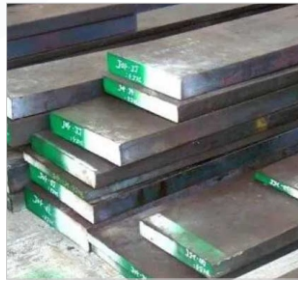
SS 202

HOT DIE STEEL

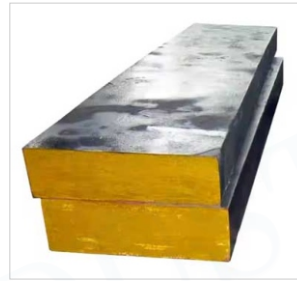


H13 / H11

PLASTIC MOULD STEEL



1.2311



1.2738

STAINLESS STEEL



SS 304-304L
SS 316-316L

NON MAGNETIC STEEL



SS410 / SS420 / SS 431

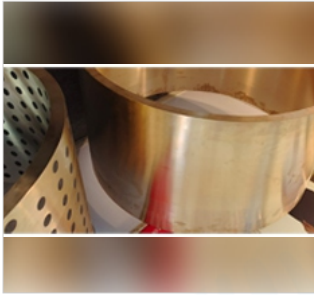
HIGH SPEED STEEL



M2 / M35 / M42



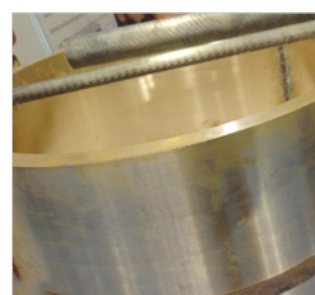
Hchcr/WPS/D3

PHOSPHOR BRONZES

CUTTING FACILITY UPTO DIA 520

MS/C45 PLATE CUTTING

BRASS

COPPER

GUNMETAL

Chemical Composition

	C	Mn	Si	S	P	Cr	Ni	Mo
EN-8	.35 - .45	.60 - 1.00	.10 - .35	.050 Max	.050 Max	-	-	-
EN-8D	.40 - .45	.70 - .90	.05 - .35	.060 Max	.060 Max	-	-	-
EN-9	.50 - .60	.50 - .80	.05 - .35	.040 Max	.040 Max	-	-	-
EN-15	.30 - .40	1.30 - 1.70	.10 - .35	.040 Max	.040 Max	-	-	-
EN-16	.30 - .40	1.30 - 1.80	.10 - .35	.040	.040	-	-	.20 - .30
EN-18	.35 - .45	.60 - .95	.10 - .35	.040	.040	.85 - 1.15	-	-
EN-19	.35 - .45	.50 - .80	.10 - .35	.040	.040	.90 - 1.40	-	.20 - .40
EN-24	.35 - .45	.45 - .70	.10 - .35	.040	.040	.90 - 1.40	1.30 - 1.80	.20 - .40
EN-25	.27 - .35	.50 - .70	.10 - .35	.040	.040	.50 - .80	2.30 - 2.80	.40 - .70
EN - 31	.90 - 1.20	.30 - .75	.10 - .35	.040	.040	1.00 - 1.60	-	-
EN - 36B	.12 - .18	.30 - .60	.10 - .35	.040	.040	.60 - 1.10	3.00 - 3.75	-
EN - 36C	.12 - .18	.30 - .60	.10 - .35	.040	.040	.60 - 1.10	3.00 - 3.75	.10 - .25
EN - 41B*	.35 - .45	.60 Max	.10 - .45	.040	.040	1.50 - 1.80	.40 Max	.10 - .25
EN - 42	.70 - .85	.55 - .75	.10 - .40	.040	.040	-	-	-
EN - 45A	.55 - .65	.70 - 1.00	1.70 - 2.0	.040	.040	-	-	-
EN - 47	.45 - .55	.50 - .80	.50 MAX	.040	.040	.80 - 1.20	-	-
EN - 48A	.50 - .60	.60 - .90	1.35 - 1.65	.040	.040	.55 - .85	-	-
EN - 353	.20 Max	.50 - 1.00	.35 MAX	.040	.040	.75 - 1.25	1.00 - 1.50	.08 - .15
EN - 354	.20 Max	.50 - 1.00	.35 MAX	.040	.040	.75 - 1.25	1.50 - 2.0	.10 - .20
16Mncr5	.14 - .19	1.00 - 1.30	.15 - .40	.035 Max	.035 Max	.80 - 1.10	-	-
20Mncr5	.17 - .22	1.10 - 1.40	.10 - .35	.035	.035	1.00 - 1.30	-	-
SAE - 4140	.38 - .43	.75 - 1.00	.20 - .35	.035	.035	.80 - 1.10	.15 - .25	-
SAE - 4150	.48 - .53	.75 - 1.00	.20 - .35	.040	.040	.80 - 1.10	-	.15 - .25
SAE - 4320	.17 - .22	.45 - .65	.15 - .35	.035 Max	.040 Max	.40 - .60	1.65 - 2.00	.20 - .30
SAE - 4340	.38 - .43	.60 - .80	.15 - .35	.035 Max	.040 Max	.70 - .90	1.65 - 2.00	.20 - .30
SAE - 8620	.18 - .23	.70 - .90	.20 - .35	.040	.040	.40 - .60	.40 - .70	.15 - .25
SAE - 52100	.95 - 1.10	.25 - .40	.20 - .35	.025	.025	1.30 - 1.60	-	-
F - 22	.15 Max	.30 - .60	.40 Max	.040	.040	2.00 - 2.5	-	.87 - 1.30
17crnimo6	.14 - .19	.40 - .60	.15 - .40	.035 MAX	.035 Max	1.50 - 1.80	1.40 - 1.70	.25 - .35
A - 105	.35 MAX	.60 - 1.05	.35 Max	.050 MAX	.040 Max	-	-	-
LF-2	.30 MAX	.60 - 1.35	.15 - .30	.040 MAX	.035 Max	-	-	-

WEIGHT FORMULA

SPECIAL FORMULA (SIZE IN MM) ALL WEIGHT PER MTR.

MILD & ALLOY & CARBON STEEL

Round	MM X MM x 0.00617
Hex	MM X MM x 0.00678
Square	MM X MM x 0.00785

BRASS

Round	MM X MM x 0.00668
Hex	MM X MM x 0.0074
Square	MM X MM x 0.00855

COPPER

Round	MM X MM x 0.007
Hex	MM X MM x 0.00775
Square	MM X MM x 0.00895

ALLUMINIUM

Round	MM X MM x 0.00216
Hex	MM X MM x 0.00234
Square	MM X MM x 0.00275

GUNMETAL & P.B.

Round	MM X MM x 0.00700
Square	MM X MM x 0.00895

WEIGHT OF PIPE

OD (-) Wall Thickness x Wall thickness x 0.02478 = 1 MTR. Wt.

WEIGHT OF ALLUM SHEET / PLATE

MTR x MTR x THICK x 2.75 = Piece Weight

WEIGHT OF SS & MS SHEET / PLATE

MTR x MTR x THICK x 7.8 = Piece Weight

WEIGHT OF BRASS SHEET / PLATE

MTR x MTR x THICK x 8.6 = Piece Weight

CONTACT

Bhairav Metals



MR. PARESH SHAH (DIRECTOR)
+91 8956578424



MR. DILIP SHAH (DIRECTOR)
+91 9860203888
bhairavmetals@gmail.com
bhairavalloyindustries@gmail.com



www.bhairavmetals.com



Unit 1 Sr. No. 12, Shantinagar, MIDC, Bhosari,
Pune-411039, Maharashtra, India.

Unit 2 Plot No. W-76, MIDC, Bhosari, Pune - 411039,
Maharashtra, India.